



AGRICOLE
FORTE



PO DELTA REGIONAL PARK, THE DISTINGUISHING ELEMENT!

Our story began in 1962, here in the heart of the **Po Delta Regional Park**, a unique and generous region that has helped turn our passion into an outstanding agro-industrial company specialised in the production and transformation of Alfalfa.



Supporter of the
Po Delta Biosphere
man and nature together



**A FOCUS ON THE
ENVIRONMENT DETERMINES
THE QUALITY OF THE FORAGE**



**WE GROW ALFALFA SINCE 1962,
A VALUABLE FEED FOR ANIMAL
HEALTH AND WELL-BEING.**

60th
ANNIVERSARY
1962-2022



GROWING ALFALFA HELPS THE ENVIRONMENT



Contributes to biodiversity
A crop that gains value for its function as a habitat for various animal species and essential for beekeeping.



Reduces erosion
Polyannual crops mean that the land is not ploughed over a period of 4-5 years, reducing erosion and leaching of soil nutrients.



Avoids aquifer contamination
Lucerne is a polyannual leguminous plant, an excellent nitrogen-fixer which does not require synthetic fertilisers.



Environmentally friendly
Production techniques that guarantee no use of pesticides and herbicides.



Creates a greener landscape
It is an irreplaceable resource within our ecosystem, contributing to the diversification of the environmental mosaic and increasing the aesthetic value of the landscape.



[F]
dal 1962
High-Grade Alfalfa

Luigi Forte

Leonardo Forte

**WE ARE
WHAT
WE EAT!**

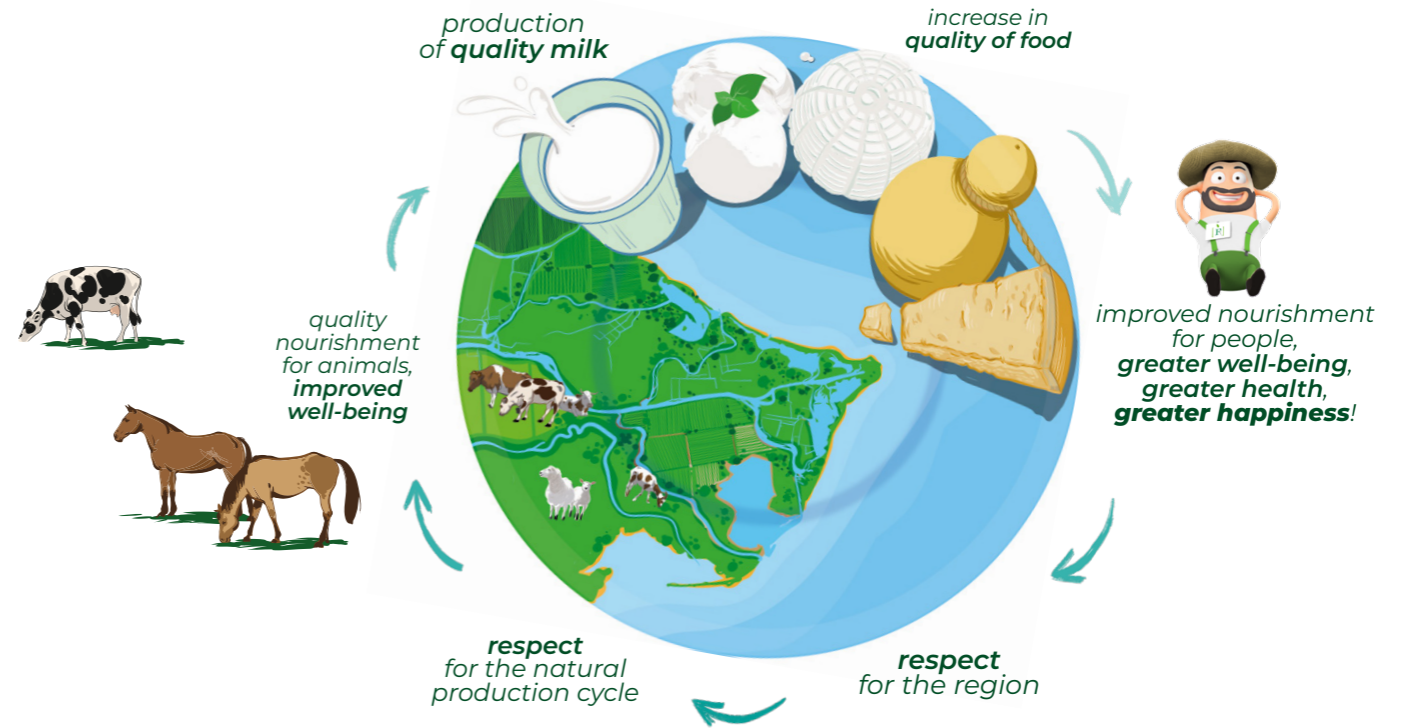


THE FOUNDATION OF OUR VALUE:

- A food that is naturally healthy and safe;
- Constant and certified quality;
- Extremely easy to use: forage is ready to be given, reducing the time and cost of TMR preparation;
- A raw material of Italian origin for which we certify the production district.



**FROM FIELD
TO TABLE**



THE FORTE SYSTEM

INCOMING GREEN PRODUCT

- Field inspections conducted by our operators
- Sampling of each truckload of incoming green product
- Moisture analysis through the use of thermobalances
- Real time data collection

PRODUCTION

- Supervision of the various production lines by our operators
- Sampling of the outgoing product every five hours in accordance with ISO 9001 procedures
- Moisture and protein analysis conducted within our internal laboratory
- Real time data collection of the transformed product

STORAGE

- Storage of product and classification according to quality and nutritional parameters
- Periodic general inspections
- Product stored in closed and monitored warehouses

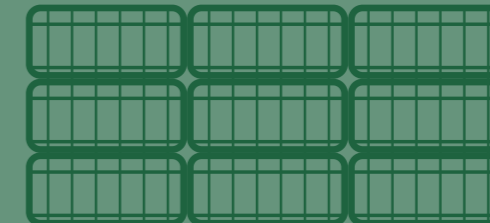


Supporter of the
Po Delta Biosphere
man and nature together

PRODUCTION AREA
VENETO
EMILIA ROMAGNA
100% ITALIAN PRODUCT



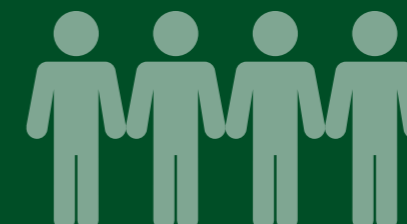
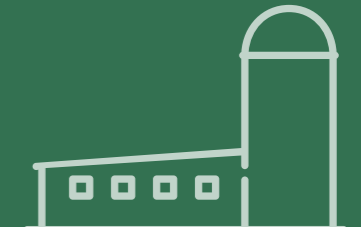
4,000 HA
CULTIVATED
SURFACE AREA



45,000
TONS/YEAR



3
PRODUCTION
FACILITIES



50
OPERATORS
ALONG THE ENTIRE
PRODUCTION CHAIN

FLAVOUR



NOTES OF FLAVOUR

Thanks to the significant presence of beta-carotene, the level of palatability and digestibility for the animal is very high.

NUTRIENTS

- Beta-carotene
- Vitamin A - B2 - B3
- Potassium and Omega 3s
- Protein and Minerals
- Chlorophyll
- Xanthophylls
- Sugars

NUTRACEUTICAL PROPERTIES

- Carotenoids
- Anti-tumour
- Cardiopathy
- Anti-hemorrhagic
- Dietary supplement
- Fertility



€ colour

€ palatability

€ fragrance

€ aroma

€ flavour



[FORTE] ALFALFA HIGH-GRADE



VALUE



BEYOND FIBER: NUTRITIONAL AND ORGANOLEPTIC SUBSTANCES

CONTAINS

- Significant protein content
- Natural vitamins and pro-vitamins, like **Vitamin E** and **beta-carotene**
- Macro and micro elements

IMPROVES

- Bovine fertility
- Milk production
- Palatability of the ration
- Safety: absence of micro-toxins

REDUCES

- Reduction of metabolic issues in the animal
- Optimisation of the use of natural supplements
- Reduction in time and cost of TMR preparation
- Risks connected to instability of the ration



BROWSE "GIGI'S"
ADVICE FOR HANDLING
FORAGE BLENDS





**FOR OVER
60 YEARS
WORKING
ALONGSIDE THE
BEST BREEDERS
AND FEED
PRODUCERS**

RANGE OF PRODUCTS



BREEDERS AREA

The year-round availability of forage that offers the exact same nutritional value as a fresh product turns our Alfalfa into a "Field in the barn".

Thanks to its strong buffering capacity, our Alfalfa represents an important element of ruminal stability in diets that are particularly rich in concentrates.

FEED AREA

Alfalfa represents a nutritional foundation and an element of stability in the rations of all ruminants and herbivores.

It provides nutritional characteristics that are particularly suitable to the formulation of rations that meet the needs of ruminants, young growing animals, sheep and goats, equids, and leporids.

A FIELD IN THE BARN

Our dehydrated Alfalfa forage is a nutritious feed that improves the performance of the animals and the income of breeders.

BALES, PELLETS, & WAFERS

Discover the entire range of products!

BALES



FiberActive

RUMINANTS
CAMELIDS
EQUINES

Intensive and extensive breeding
Gestation
Moderate growth

FiberActive is made with dehydrated first-harvest hay. Its low protein, calcium, and potassium content makes it particularly well-suited for inclusion in the feed rations of dairy cows in their dry period and especially for the formulation of diets during the steaming up phase, with the objective of encouraging a balance of minerals that helps to prevent hypocalcaemia and puerperal disorders.

CHARACTERISTICS

Its physical characteristics keep the stimulus of chewing and rumination high, favouring a particularly stable ruminal metabolic profile that contributes to high ingestion.

NUTRITIONAL INFORMATION

MOISTURE	< 11 %
CRUDE PROTEIN	< 14 %
FIBER	28 - 30 %
RFV	< 130

PACKAGING

- 350 – 400 KG BALES
certified galvanised iron wire tied
- 650 - 700 KG BALES
UV polypropylene twine tied

LOADING INFO

WALKING FLOOR OR TAUTLINER
60 – 77 bales weighing 350 – 400 kg each
38 – 40 bales weighing 650 – 700 kg each

40' HC CONTAINER
32 bales weighing 650 – 700 kg each

BALES



AlfalfaRumiPower70

RUMINANTS
MONOGASTRIC ANIMALS
CAMELIDS
EQUINES

Intensive and extensive breeding
Gestation
Moderate growth

AlfalfaRumiPower70 is a forage made primarily with dehydrated Alfalfa. It is a high-quality fibrous product that complements all dietary rations used in ruminant livestock production.

CARATTERISTICHE

Alfalfa is a very important forage, especially in the diet of livestock used in dairy production, and is an essential element in the dietary stability.

NUTRITIONAL INFORMATION

MOISTURE	< 11 %
CRUDE PROTEIN	16-17 %
FIBER	28 - 30 %
RFV	130-140

PACKAGING

- 350 – 400 KG BALES
certified galvanised iron wire tied
- 650 - 700 KG BALES
UV polypropylene twine tied

LOADING INFO

WALKING FLOOR OR TAUTLINER
60 – 77 bales weighing 350 – 400 kg each
38 – 40 bales weighing 650 – 700 kg each

40' HC CONTAINER
32 bales weighing 650 – 700 kg each





AlfalfaRumiSprint80 is produced using the summer cuttings of our Alfalfa and is an excellent source of quality nutrients, especially for milk producing animals. Its high palatability makes it the perfect forage for milk producing livestock, serving as an element of dietary stability.

CHARACTERISTICS

Its high palatability and the presence of stable natural fibers make this the ideal forage for the raising of milk producing livestock. Alfalfa RumiSprint80 is an essential element in the dietary stability.

NUTRITIONAL INFORMATION

MOISTURE	< 11 %
CRUDE PROTEIN	18-19 %
FIBER	26 - 28 %
RFV	150-155

PACKAGING

- 350 – 400 KG BALES
certified galvanised iron wire tied
- 700 - 720 KG BALES
UV polypropylene twine tied

LOADING INFO

WALKING FLOOR OR TAUTLINER
60 – 77 bales weighing 350 – 400 kg each
38 – 40 bales weighing 700 - 720 kg each

40' HC CONTAINER
32 bales weighing 700 - 720 kg each

AlfalfaRumiSprint80

RUMINANTS
MONOGASTRIC ANIMALS
CAMELIDS
EQUINES

High production yields
Lactation
Growth



High-GradeAlfalfa is produced with highly nutritious dehydrated Alfalfa, perfect for the formulation of balanced diets for dairy cows and high-milk-yield sheep and goats.

CHARACTERISTICS

Alfalfa is a very important forage, especially in the diet of high-milk-yield ruminants and, thanks to its high buffering capacity, represents an important element of ruminal stability in diets that are particularly rich in concentrates.

NUTRITIONAL INFORMATION

MOISTURE	< 11 %
CRUDE PROTEIN	> 20 %
FIBER	26 - 28 %
RFV	160-170

PACKAGING

- 350 – 400 KG BALES
certified galvanised iron wire tied
- 700 - 720 KG BALES
UV polypropylene twine tied

LOADING INFO

WALKING FLOOR OR TAUTLINER
60 – 77 bales weighing 350 – 400 kg each
38 – 40 bales weighing 700 - 720 kg each

40' HC CONTAINER
32 bales weighing 700 - 720 kg each

High-GradeAlfalfa

ANIMALS OF HIGH-YIELD
RUMINANTS

Reproduction
High production yields
Lactation
Growth



PELLETS



AlfalfaFiber is a fibrous pellet produced with dehydrated first cutting hay, that is particularly well-suited for the formulation of ruminant and monogastric diets with a moderate energy content.

CHARACTERISTICS

AlfalfaFiber is also well-suited for inclusion in the feed rations of young replacement livestock.

NUTRITIONAL INFORMATION

MOISTURE	< 11 %
CRUDE PROTEIN	< 13 %
FIBER	28 - 30 %
RFV	< 130

PACKAGING

- 1000-1500 kg big bags
- 25 kg bag
- bulk

LOADING INFO

WALKING FLOOR OR TAUTLINER
30 tons (up to)

40' HC CONTAINER
26 tons



AlfalfaFiber

RUMINANTS
MONOGASTRIC ANIMALS
CAMELIDS
EQUINES
RABBITS

Intensive and extensive breeding
Gestation
Moderate growth
Maintenance
Wellness

PELLETS



Alfalfa70 is a high quality fibrous product in pellet form, made primarily with summer cuttings of our Alfalfa forage, that complements all dietary rations use in ruminant livestock production.

CHARACTERISTICS

Thanks to our temperature-controlled dehydration process, we produce a healthy product that is free of mould, insects, dust, and foreign bodies.

NUTRITIONAL INFORMATION

MOISTURE	< 11 %
CRUDE PROTEIN	16-17 %
FIBER	28 - 30 %
RFV	130-140

PACKAGING

- 1000-1500 kg big bags
- 25 kg bag
- bulk

LOADING INFO

WALKING FLOOR OR TAUTLINER
30 tons (up to)

40' HC CONTAINER
26 tons



Alfalfa70

RUMINANTS
HERBIVORES
MONOGASTRIC ANIMALS
CAMELIDS
EQUINES
RABBITS

Maintenance
Livestock production

PELLETS



Alfalfa80 pellets are produced using the summer cuttings of our Alfalfa and are an excellent source of quality nutrients, especially for milk producing animals. They provide a natural source of organic calcium, beta-carotene, choline, Vitamin E, and Omega 3 and 6 essential fatty acids, a result of the FORTE method which is aimed at producing the best forage for the proper feed rations of every type of animal.

CHARACTERISTICS

Thanks to their high palatability and the quality of their fibrous component, they are particularly well-suited for inclusion in the modern feed rations of milk producing livestock. Their composition also makes them competitive with respect to other food sources in the protein rations of beef cattle.

NUTRITIONAL INFORMATION

MOISTURE	< 11 %
CRUDE PROTEIN	18-19 %
FIBER	26 - 28 %
RFV	150-155

PACKAGING

- 1000-1500 kg big bags
- 25 kg bag
- bulk

LOADING INFO

WALKING FLOOR OR TAUTLINER
30 tons (up to)

40' HC CONTAINER
26 tons



Alfalfa80

RUMINANTS
HERBIVORES
MONOGASTRIC ANIMALS
CAMELIDS
EQUINES
RABBITS

High production yields
Lactation
Growth

PELLETS



High-Grade AlfaAlfa is an ideal component of a well-balanced diet for animals that require a high amount of protein. It is also rich in beta-carotene, a provitamin that is very useful in supporting the productive and reproductive needs of high-milk-yield ruminants and other herbivorous livestock. Furthermore, the natural amount of essential fatty acids in Alfalfa boosts the Omega-3 fatty acid content of milk and meats.

CHARACTERISTICS

The immediate dehydration of the forage promptly after harvesting guarantees the product's intense and aromatic fragrance and bright green colour, typical of young, leafy, and highly palatable plants.

NUTRITIONAL INFORMATION

MOISTURE	< 11 %
CRUDE PROTEIN	> 20 %
FIBER	26 - 28 %
RFV	160-170

PACKAGING

- 1000-1500 kg big bags
- 25 kg bag
- bulk

LOADING INFO

WALKING FLOOR OR TAUTLINER
30 tons (up to)

40' HC CONTAINER
26 tons



High-GradeAlfalfa

ANIMALS OF HIGH-YIELD
RUMINANTS

Reproduction
High production yield
Lactation

WAFERS



ForteWaferBase

ALL TYPES OF EQUINES

Recreational riding horses
Riding school horses
Growing foals

Its physical characteristics help to stimulate mastication and rumination, promoting a particularly stable ruminal metabolic profile which encourages greater ingestion. The efficient extraction process guarantees a low level of dust to promote optimal functioning of the respiratory system.

USE

ForteWaferBase is to be given to active and training horses in the ratio of 1-1,5 kg/100 kg of body weight. Always make quality forage and clean water available. Preserve the product in a cool, dry place, far from sources of heat.

INGREDIENTI

- Dust-Free Dehydrated Alfalfa
- Dust-Free Polyphyletic Hay
- Sugar cane molasses
- Glucose and Fructose Syrup, Maltodextrin, and Sucrose
- Vitamin E 3a700
- Choline Chloride 3a890
- Butylhydroxytoluene (BHT) E321

NUTRITIONAL VALUE

CRUDE PROTEIN	12 %
CRUDE OIL AND FATS	2 %
CRUDE FIBER	26 %
CRUDE ASH	6 %
TOTAL SODIUM	0.05 %

PACKAGING

- 1000 kg big bag
- 20-25 kg bag on pallets

LOADING INFO

WALKING FLOOR OR TAUTLINER
22-24 tons

40' HC CONTAINER
21-22 tons



WAFERS



ForteWaferCereali

ALL TYPES OF EQUINES

Sport horses
Horses subjected to Intense activity and training

ForteWaferCereali contain flaked corn and barley which promote greater endurance in animals. In addition to stimulating the digestive system, the cereals contained in these wafers make horses healthier and improve their overall condition. The wafers contain select dehydrated Alfalfa and hay. The Alfalfa provides quality protein which is essential for improving the animals' muscle condition.

USE

ForteWaferCereali is to be given to active and training horses in the ratio of 1-1,5 kg/100 kg of body weight. Always make quality forage and clean water available. Preserve the product in a cool, dry place, far from sources of heat.

INGREDIENTS

- Dust-Free Dehydrated Alfalfa
- Dust-Free Polyphyletic Hay
- Whole Barley
- Flaked Corn
- Sugar cane molasses
- Glucose and Fructose Syrup, Maltodextrin, and Sucrose
- Vitamin E 3a700
- Choline Chloride 3a890
- Butylhydroxytoluene (BHT) E321

NUTRITIONAL VALUE

CRUDE PROTEIN	12,5 %
CRUDE OIL ANF FATS	2 %
CRUDE FIBER	24 %
CRUDE ASH	6 %
TOTAL SODIUM	0.05 %

PACKAGING

- 1000 kg big bag
- 20-25 kg bag on pallets

LOADING INFO

WALKING FLOOR OR TAUTLINER
22-24 tons

40' HC CONTAINER
21-22 tons' HC



GAMMA WAFER



ForteNaturalMix

ALL TYPES OF EQUINES

Sport Horses
Horses which are subjected to intense activity and training

A balanced food made from dehydrated long-stem forage, enriched with grains, which provides energy through fiber, fats, and high quality proteins. Thanks to its energy content, noble proteins, and the proper amount of vitamins and minerals, **ForteNaturalMix** is a product that is able to maintain substantial and balanced muscle mass.

USE

ForteNaturalMix is to be given to active and training horses in the ratio of 1-1.5 kg/100 kg of body weight. Always make quality forage and clean water available. Store the product in a cool, dry place, far from sources of heat.

CHARACTERISTICS

Intended for sport horses and horses which are subjected to intense activity and training. Also useful for horses which are fatigued from races, in order to facilitate rapid recovery of energy and help them return to optimal physical form.

INGREDIENTS

- Wheat Middlings
- Crushed Barley
- Oats
- Corn Flakes
- Dust-free Dehydrated Alfalfa
- Pellets of Dehydrated Alfalfa
- Dehydrated polyphite hay
- Sugar cane molasses
- Glucose and Fructose
- Maltodextrin and Sucrose

NUTRITIONAL VALUE

CRUDE PROTEIN	13,1 %
CRUDE OIL AND FATS	2,65 %
CRUDE FIBER	12 %
CRUDE ASH	7,6 %
PHOSPHOROUS	0,05 %
SODIUM	0,35 %
MAGNESIUM	0,18 %

PACKAGING

- 1000 kg sacks on pallets
- 20-25 kg sacks on pallets

LOADING INFO

22-24 tons on a lorry or B-train
20 -21 tons in a 40' HC container

REASONS & RULES

5 REASONS

1 HEALTH AND SAFETY

Our Alfalfa's dehydration process is powered by energy from natural sources. The result of this process makes it possible to retain the nutritional contents and to obtain a sanitised and fragrant product that is easy to preserve.

2 PRODUCT ORIGINS AND CONSISTENCY

Our certified traceability system provides a guarantee of transparency and liability regarding the origins of our raw materials which are sourced from a district of identified origin.

3 THE RIGHT PRODUCT

A range of products with different nutritional profiles, in various formats and packaging. Excellent storage stability with no pollutants of microbial origin. High protein content associated with an easily digestible fibrous component. Source of beta-carotene.

4 UPDATES

The NIR sensors installed in the processing systems monitor the nutritional and organoleptic specifications along with moisture content of the forage. The products are delivered with a detailed analysis which makes it possible to optimise the formulation of the feed rations.

5 WE'RE PROFESSIONALS

All of our operators are professionally qualified, with the appropriate licenses, and perform their jobs with love and dedication.

5 RULES

1 SELECTED SEEDS

We have always encouraged biodiversity by using select and certified seeds from local ecotypes of the Pomposa and Delta varieties.

2 SANITISED PRODUCT

The dehydrator is powered by energy from natural sources. The result of this process is a healthy and fragrant product that is easy to preserve. The low level of dust promotes optimal functioning of the respiratory system.

3 SIMPLE TO USE

The forage is already ready to be used in the preparation of the TMR, with a consequent reduction in preparation costs and times.

4 ALWAYS AVAILABLE

The product is preserved and stored in appropriate ventilated warehouses, guaranteeing optimal preservation. Our products are always available to meet all the needs of breeders and feed manufacturers.

5 GMO FREE

None of our products are genetically modified, all are GMO-free and processed using mechanical methods, without the use of preservatives.








AGRICOLE
FORTE

CONDUZIONI AZIENDE
AGRICOLE FORTE Srl
via Marina 9
45019 Taglio di Po (RO) Italy

 T +39 **0426 81097**

commerciale@agricoleforte.com


agricoleforte.com

